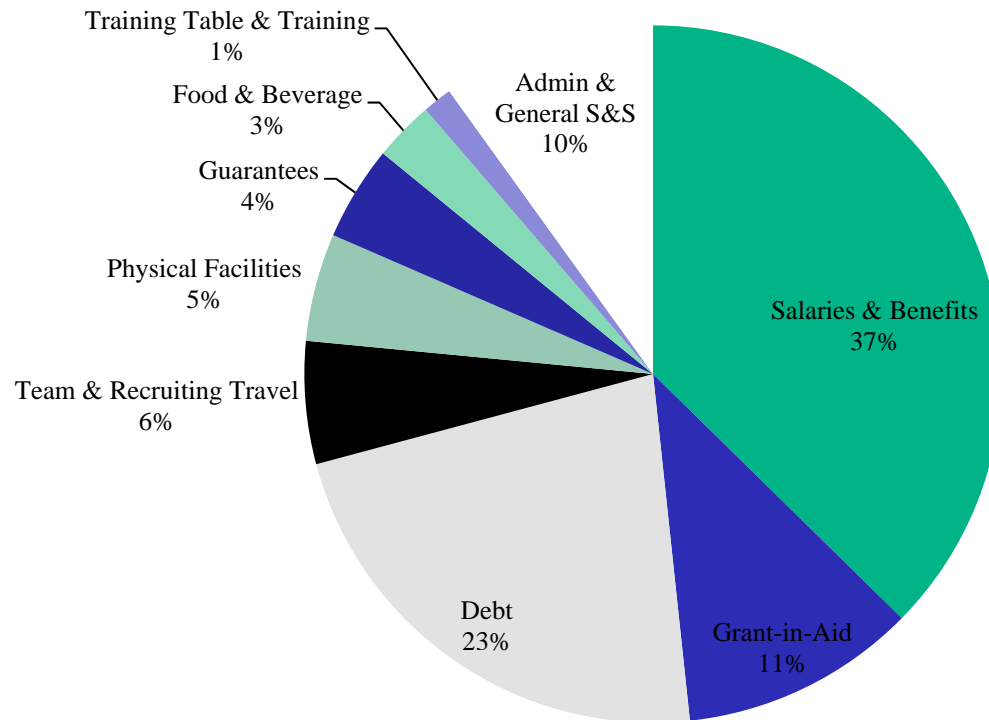


FY2012: Total Expenses = \$88 million

Analysis by Type of Expense



Note: Admin & General S&S includes S&S expenses related to: compliance office, technology, equipment room, fundraising, marketing, media services, event management, treatment center (including medical and insurance expenses), strength and conditioning, student services, ticket office, video operations, team equipment, other team S&S, Athletic Director's office, and university assessments.